



Sportinghall fixture for demanding installations with demanding anti-glare requirements.

Housing made from powdercoated Aluzink RAL 9010. Foldable reinforced white louvre. Can also be supplied without louvre.

Reflectors made from metallised purealuminium and diffusionplate.

Mounted flush to ceiling, by wires or tube with tubular mount or adjustable ceilingbrackets.

Connection via ends. Equipped with 2.5 mm² throughwiring 5- or 7-wire.

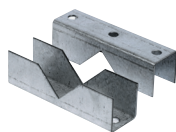
Dimmable (TDC), push-button or Dali and also has integrated corridor function.

Lifespan L80 Ta25 100000h (B50)
MacAdam 3 SDCM CRI >80

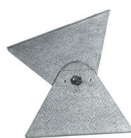
IP 20 | CE



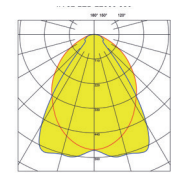
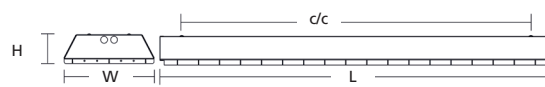
Cable fastener



Tubular mounts



Adjustable ceiling ceilingbracket



Accessories	Art no.	E no.
Cable fastener (pair)	9 550 30	79 550 30
Tubular mountings (pair)	9 550 28	79 550 28
Adjustable ceiling bracketss (pair)	9 550 16	79 550 12

Type	Lumen	Art no.	E no.	L	W	H	c/c	Power	Weight
IR 52 LED 11000 830	10800	1 523 01	70 137 65	1182	271	72	1050	96	6,4
IR 52 LED 11000 840	11250	1 523 03	70 137 66	1182	271	72	1050	96	6,4
IR 52 LED 22000 830	21600	1 523 05	70 137 67	1182	516	72	1050	192	11,2
IR 52 LED 22000 840	22500	1 523 07	70 137 68	1182	516	72	1050	192	11,2
IR 52 LED 11000 830 TDC *	10800	1 523 09	70 137 69	1182	271	72	1050	96	6,4
IR 52 LED 11000 840 TDC *	11250	1 523 11	70 137 70	1182	271	72	1050	96	6,4
IR 52 LED 22000 830 TDC *	21600	1 523 13	70 137 71	1182	516	72	1050	192	11,2
IR 52 LED 22000 840 TDC *	22500	1 523 15	70 137 72	1182	516	72	1050	192	11,2

* Equipped with amplitude-dimmable driver for DALI, push-button control and corridor function.