



High-performance industrial luminaire. Some versions have more than 170 lm/W.

Aluzinc housing and endcaps. Metallised aluminium reflector. Equipped with diffusionplate which effectively reduces glare.

Very flexible due to several different lightdistributions and luminous outputs. From 5000 lm up to over 21000lm. Wide beam (W), medium beam (M) and narrow beam (N) for aisles and high ceilings. Connected at ends via dual glands. 5x2.5 mm<sup>2</sup> throughwiring as standard.

Mounted by wire, rails or flush to ceiling. Integrated wirebrackets which fold out from the housing. Accessories include several versions of clasps for different roof systems and sportshall systems.

Also available in 5-pole and 2-pole quick coupling with adapted cable or earthed plug for the next fixture (c/c measurements must be provided).

Equipped with robust industrial driver with high resilience against power surges. Adjustable version with Touch-Dim, Dali and corridor function (TDC).

Lifespan L80 Ta25 100000h (B50)  
ID 40 LED 21000 has 80000h.  
MacAdam 3 SDCM CRI: >80

IP 23 | CE **AirC**



White (Option)



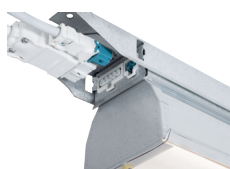
Extendible block terminal (Included)



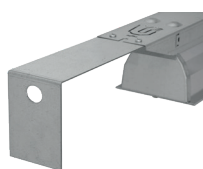
Integrated cable wire bracket (Included)



Quick-connection version (Option)



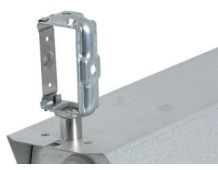
Quick-connection system (Option)



Bracket for roof system



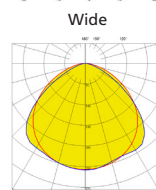
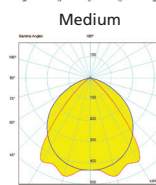
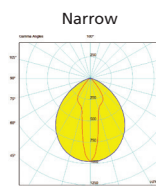
Sports hall system



KBA rail bracket



AirC sensor



Accessory	Art no.	E no.
Sports hall systems 1200 mm	9 554 51	72 139 75
Sports hall systems 1500 mm	9 554 53	72 139 76
Bracket for roof system (pair)	9 550 57	-
KBA rail bracket (pair)	9 554 16	72 139 77
KBB rail bracket (pair)	9 554 17	72 139 78
Adjustable bracket (pair)	9 550 18	79 550 19



### Narrow beam (N) Length 1360

Narrow beam (N)	Lumen	Art no.	E no.	L	W	H	c/c	Power	Weight
ID 40 LED 7000 S 830	6910	4 523 01	72 113 43	1360	120	110	1340	45	3
ID 40 LED 7000 S 840	7200	4 523 03	72 113 46	1360	120	110	1340	45	3
ID 40 LED 14000 S 830	13710	4 524 21	72 159 74	1360	120	110	1340	89	3,5
ID 40 LED 14000 S 840	14280	4 524 22	72 159 75	1360	120	110	1340	89	3,5
ID 40 LED 7000 S 830 TDC *	6910	4 523 25	72 113 55	1360	120	110	1340	45	3
ID 40 LED 7000 S 840 TDC *	7200	4 523 27	72 113 58	1360	120	110	1340	45	3
ID 40 LED 14000 S 830 TDC *	13710	4 524 24	72 159 76	1360	120	110	1340	89	3,5
ID 40 LED 14000 S 840 TDC *	14280	4 524 25	72 159 78	1360	120	110	1340	89	3,5



### Medium beam (M) Length 1360

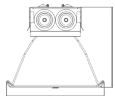
Medium beam (M)	Lumen	Art no.	E no.	L	W	H	c/c	Power	Weight
ID 40 LED 5000 M 830	4950	4 523 53	72 133 09	1360	105	100	1340	32	3
ID 40 LED 5000 M 840	5160	4 523 55	72 133 16	1360	105	100	1340	32	3
ID 40 LED 7000 M 830	6820	4 523 05	72 113 42	1360	105	100	1340	45	3
ID 40 LED 7000 M 840	7100	4 523 07	72 113 45	1360	105	100	1340	45	3
ID 40 LED 14000 M 830	13680	4 524 27	72 159 78	1360	105	100	1340	89	3,5
ID 40 LED 14000 M 840	14250	4 524 28	72 159 79	1360	105	100	1340	89	3,5
ID 40 LED 5000 M 830 TDC *	4950	4 523 61	72 133 19	1360	105	100	1340	32	3
ID 40 LED 5000 M 840 TDC *	5160	4 523 63	72 133 20	1360	105	100	1340	32	3
ID 40 LED 7000 M 830 TDC *	6820	4 523 29	72 113 54	1360	105	100	1340	45	3
ID 40 LED 7000 M 840 TDC *	7100	4 523 31	72 113 57	1360	105	100	1340	45	3
ID 40 LED 14000 M 830 TDC *	13680	4 524 30	72 159 80	1360	105	100	1340	89	3,5
ID 40 LED 14000 M 840 TDC *	14250	4 524 31	72 159 81	1360	105	100	1340	89	3,5



### Wide beam (B) Length 1360

Wide beam (W)	Lumen	Art no.	E no.	L	W	H	c/c	Power	Weight
ID 40 LED 5000 B 830	4820	4 523 49	72 133 07	1360	86	100	1340	32	3
ID 40 LED 5000 B 840	5020	4 523 51	72 133 08	1360	86	100	1340	32	3
ID 40 LED 7000 B 830	6660	4 523 09	72 113 41	1360	86	100	1340	45	3
ID 40 LED 7000 B 840	5930	4 523 11	72 113 44	1360	86	100	1340	45	3
ID 40 LED 14000 B 830	13300	4 524 33	72 159 82	1360	86	100	1340	89	3,5
ID 40 LED 14000 B 840	13850	4 524 34	72 159 83	1360	86	100	1340	89	3,5
ID 40 LED 5000 B 830 TDC *	4820	4 523 57	72 133 17	1360	86	100	1340	32	3
ID 40 LED 5000 B 840 TDC *	5020	4 523 59	72 133 18	1360	86	100	1340	32	3
ID 40 LED 7000 B 830 TDC *	6660	4 523 33	72 113 53	1360	86	100	1340	45	3
ID 40 LED 7000 B 840 TDC *	6930	4 523 35	72 113 56	1360	86	100	1340	45	3
ID 40 LED 14000 B 830 TDC *	13300	4 524 36	72 159 84	1360	86	100	1340	89	3,5
ID 40 LED 14000 B 840 TDC *	13850	4 524 37	72 159 85	1360	86	100	1340	89	3,5

\* Equipped with amplitude-dimmable driver for DALI, push-button control and corridor function.



**Narrow beam (N) Length 1640**

Narrow beam (N)	Lumen	Art no.	E no.	L	W	H	c/c	Power	Weight
ID 40 LED 9000 S 830	8860	4 523 13	72 113 49	1640	120	110	1623	57	4
ID 40 LED 9000 S 840	9230	4 523 15	72 113 52	1640	120	110	1623	57	4
ID 40 LED 11000 S 830	10510	4 523 81	72 137 61	1640	120	110	1623	72	4
ID 40 LED 11000 S 840	10950	4 523 82	72 137 62	1640	120	110	1623	72	4
ID 40 LED 15000 S 830	14710	4 524 60	72 137 73	1640	120	110	1623	93	4,5
ID 40 LED 15000 S 840	15320	4 524 61	72 137 74	1640	120	110	1623	93	4,5
ID 40 LED 18000 S 830	17420	4 524 86	72 147 52	1640	120	110	1623	113	4,5
ID 40 LED 18000 S 840	18150	4 524 87	72 147 53	1640	120	110	1623	113	4,5
ID 40 LED 21000 S 830	20240	4 524 41	72 159 86	1640	120	110	1623	136	4
ID 40 LED 21000 S 840	21080	4 524 42	72 159 87	1640	120	110	1623	136	4
ID 40 LED 9000 S 830 TDC *	8860	4 523 37	72 113 61	1640	120	110	1623	57	4
ID 40 LED 9000 S 840 TDC *	9230	4 523 39	72 113 64	1640	120	110	1623	57	4
ID 40 LED 11000 S 830 TDC *	10510	4 523 84	72 137 63	1640	120	110	1623	72	4
ID 40 LED 11000 S 840 TDC *	10950	4 523 85	72 137 64	1640	120	110	1623	72	4
ID 40 LED 15000 S 830 TDC *	14710	4 524 63	72 137 75	1640	120	110	1623	93	4
ID 40 LED 15000 S 840 TDC *	15320	4 524 64	72 137 76	1640	120	110	1623	93	4
ID 40 LED 18000 S 830 TDC *	17420	4 524 89	72 147 54	1640	120	110	1623	113	4,5
ID 40 LED 18000 S 840 TDC *	18150	4 524 90	72 147 55	1640	120	110	1623	113	4,5
ID 40 LED 21000 S 830 TDC *	20240	4 524 44	72 159 88	1640	120	110	1623	136	4,5
ID 40 LED 21000 S 840 TDC *	21080	4 524 45	72 159 89	1640	120	110	1623	136	4,5



**Medium beam (M) Length 1640**

Medium beam (M)	Lumen	Art no.	E no.	L	W	H	c/c	Power	Weight
ID 40 LED 9000 M 830	8700	4 523 17	72 113 48	1640	105	100	1623	57	4
ID 40 LED 9000 M 840	9070	4 523 19	72 113 51	1640	105	100	1623	57	4
ID 40 LED 11000 M 830	10530	4 523 87	72 137 65	1640	105	100	1623	72	4
ID 40 LED 11000 M 840	10970	4 523 88	72 137 66	1640	105	100	1623	72	4
ID 40 LED 15000 M 830	14690	4 524 67	72 137 77	1640	105	100	1623	93	4,5
ID 40 LED 15000 M 840	15300	4 524 68	72 137 78	1640	105	100	1623	93	4,5
ID 40 LED 18000 M 830	17470	4 524 81	72 147 48	1640	105	100	1623	113	4,5
ID 40 LED 18000 M 840	18200	4 524 82	72 147 49	1640	105	100	1623	113	4,5
ID 40 LED 21000 M 830	20140	4 524 47	72 159 90	1640	105	100	1623	136	4
ID 40 LED 21000 M 840	20980	4 524 48	72 159 91	1640	105	100	1623	136	4
ID 40 LED 9000 M 830 TDC *	8700	4 523 41	72 113 60	1640	105	100	1623	57	4
ID 40 LED 9000 M 840 TDC *	9070	4 523 43	72 113 63	1640	105	100	1623	57	4
ID 40 LED 11000 M 830 TDC *	10530	4 523 90	72 137 67	1640	105	100	1623	72	4
ID 40 LED 11000 M 840 TDC *	10970	4 523 91	72 137 68	1640	105	100	1623	72	4
ID 40 LED 15000 M 830 TDC *	14690	4 524 70	72 137 79	1640	105	100	1623	93	4
ID 40 LED 15000 M 840 TDC *	15300	4 524 71	72 137 80	1640	105	100	1623	93	4
ID 40 LED 18000 M 830 TDC *	17470	4 524 84	72 147 50	1640	105	100	1623	113	4,5
ID 40 LED 18000 M 840 TDC *	18200	4 524 85	72 147 51	1640	105	100	1623	113	4,5
ID 40 LED 21000 M 830 TDC *	20140	4 524 50	72 159 92	1640	105	100	1623	136	4,5
ID 40 LED 21000 M 840 TDC *	20980	4 524 51	72 159 93	1640	105	100	1623	136	4,5

\* Equipped with amplitude-dimmable driver for DALI, push-button control and corridor function.



### Wide beam (B) Length 1640

Wide beam (W)	Lumen	Art no.	E no.	L	W	H	c/c	Power	Weight
ID 40 LED 9000 B 830	8550	4 523 21	72 113 47	1640	86	100	1623	57	4
ID 40 LED 9000 B 840	8910	4 523 23	72 113 50	1640	86	100	1623	57	4
ID 40 LED 11000 B 830	10340	4 523 93	72 137 69	1640	86	100	1623	72	4
ID 40 LED 11000 B 840	10770	4 523 94	72 137 70	1640	86	100	1623	72	4
ID 40 LED 15000 B 830	14260	4 524 74	72 137 81	1640	86	100	1623	93	4,5
ID 40 LED 15000 B 840	14860	4 524 75	72 137 82	1640	86	100	1623	93	4,5
ID 40 LED 18000 B 830	16840	4 524 94	72 147 65	1640	86	100	1623	113	4,5
ID 40 LED 18000 B 840	17540	4 524 95	72 147 66	1640	86	100	1623	113	4,5
ID 40 LED 21000 B 830	19520	4 524 53	72 159 94	1640	86	100	1623	136	4
ID 40 LED 21000 B 840	20330	4 524 54	72 159 95	1640	86	100	1623	136	4
ID 40 LED 9000 B 830 TDC *	8550	4 523 45	72 113 59	1640	86	100	1623	57	4
ID 40 LED 9000 B 840 TDC *	8910	4 523 47	72 113 62	1640	86	100	1623	57	4
ID 40 LED 11000 B 830 TDC *	10340	4 523 96	72 137 71	1640	86	100	1623	72	4
ID 40 LED 11000 B 840 TDC *	10770	4 523 97	72 137 72	1640	86	100	1623	72	4
ID 40 LED 15000 B 830 TDC *	14260	4 524 77	72 137 83	1640	86	100	1623	93	4
ID 40 LED 15000 B 840 TDC *	14860	4 524 78	72 137 84	1640	86	100	1623	93	4
ID 40 LED 18000 B 830 TDC *	16840	4 524 97	72 147 67	1640	86	100	1623	113	4,5
ID 40 LED 18000 B 840 TDC *	17540	4 524 98	72 147 68	1640	86	100	1623	113	4,5
ID 40 LED 21000 B 830 TDC *	19520	4 524 56	72 159 96	1640	86	100	1623	136	4,5
ID 40 LED 21000 B 840 TDC *	20330	4 524 57	72 159 97	1640	86	100	1623	136	4,5

